

# Waste King EZ Mount Adapter Install Instructions for Lenova PermaClean Drain System



Place adapter on counter  
with flanged lip facing down



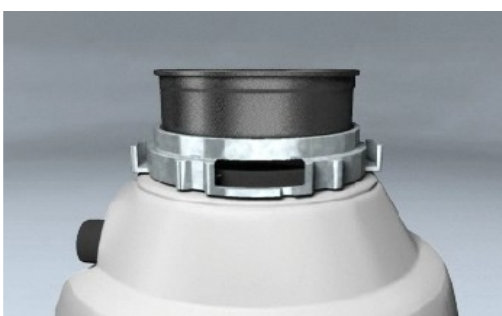
Slide metal housing over adapter



Snap rubber cushion over adapter.  
Cushion flange should be on top.  
It feels like snapping on a plastic  
Tupperware lid



Metal housing should spin freely



Turn over and slide metal housing over  
knobs on disposer and twist to secure.  
Then slip secure adapter lip into  
PermaClean Mounting seal